

LOST WAX BRONZE CASTINGS

By Cavin Richie

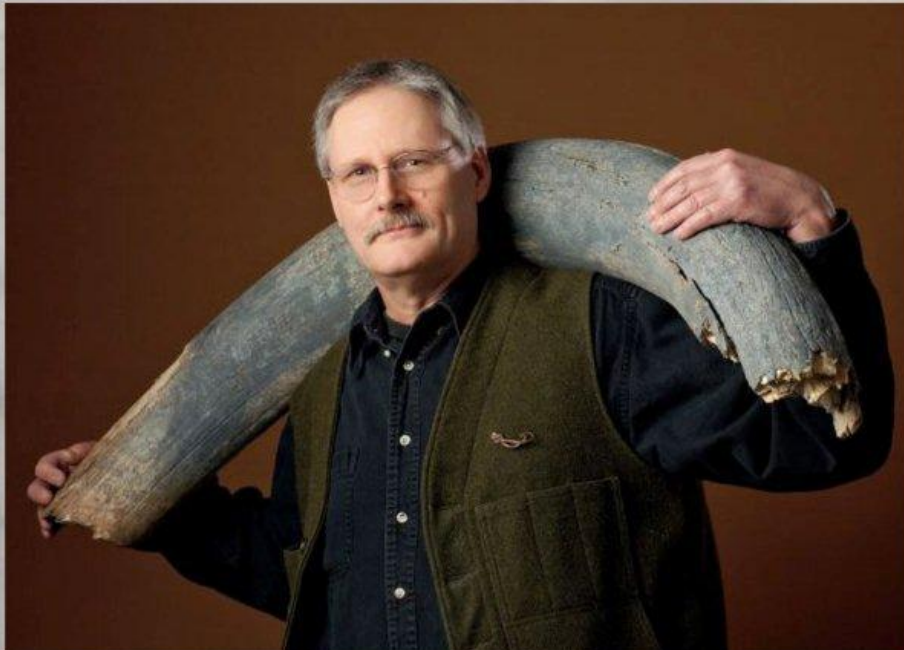
Cavin's main interest is natural history and his designs reflect this passion. Birds, mammals, sea life, fish & flora are well represented in his line of bronze castings. His castings are very accurate detailed miniature bronze sculptures that can be worn. As a buyer once remarked "affordable portable bronzes!"

The originals for Cavin's lost wax castings were first carved in shed elk antler or woolly mammoth ivory. Cavin has been carving in these mediums for the last 31 years as a production carver, creating original wildlife jewelry for galleries in the Northwest and Alaska. His many years of devoted study both in field & office has made him quite adept at creating realistic poses of wildlife.

His best carvings are selected for the bronze line. Each carving is carefully molded to obtain the waxes used in the lost wax process of casting. The bronze line of jewelry debuted in 1992 and Cavin's bronze castings are shown across the country in numerous gift shops, museums, and galleries.

"I started casting silicon bronze in the early 90's and fell in love with it. The dark earth tone of metal is enhanced with a wide range of patinas that permanently hue it, creating colors usually only associated with larger bronzes. Compared to my carvings, I like the permanence the castings convey which is in sharp contrast to the current status of today's wildlife".

Cavin works and lives near Port Townsend, Washington on Mats Mats Bay.



Cavin with 10,000 to 30,000 year old woolly mammoth ivory